

Configuring EDUROAM for Windows XP

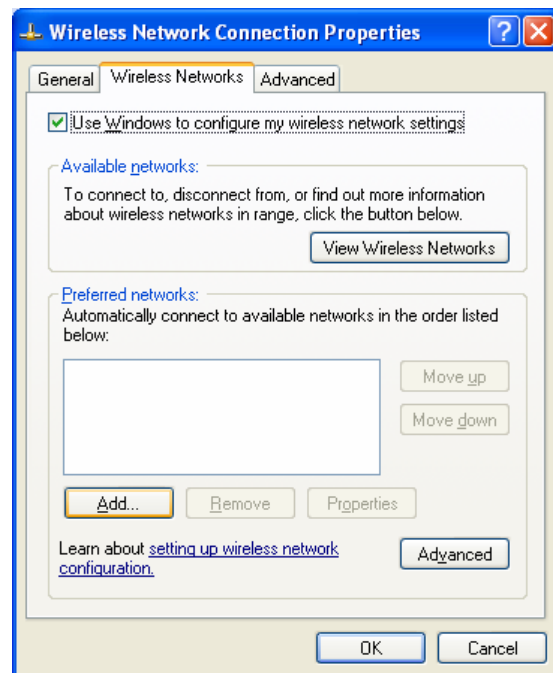
1. Setting up the wireless network

Click right on the Wireless icon, and select **Properties**

Click the **Wireless Networks** Tab,

Mark "Use Windows to set up my wireless network settings",

and then **Add**.



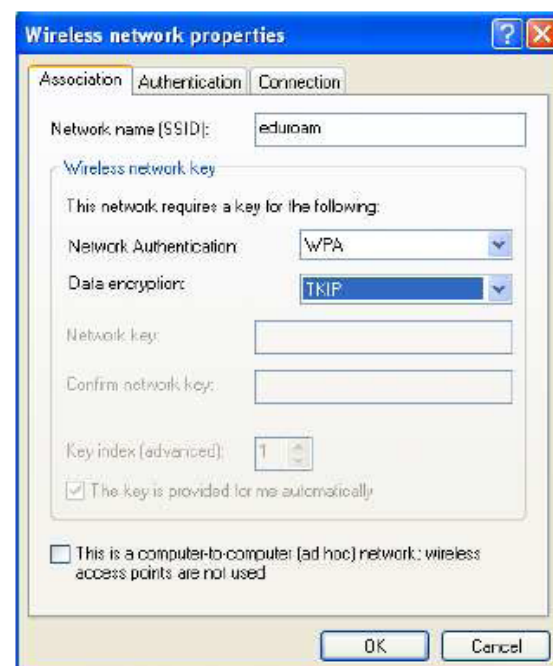
Enter **eduroam** as **Network name**,

and select

WPA Network Authentication and

TKIP Data encryption,

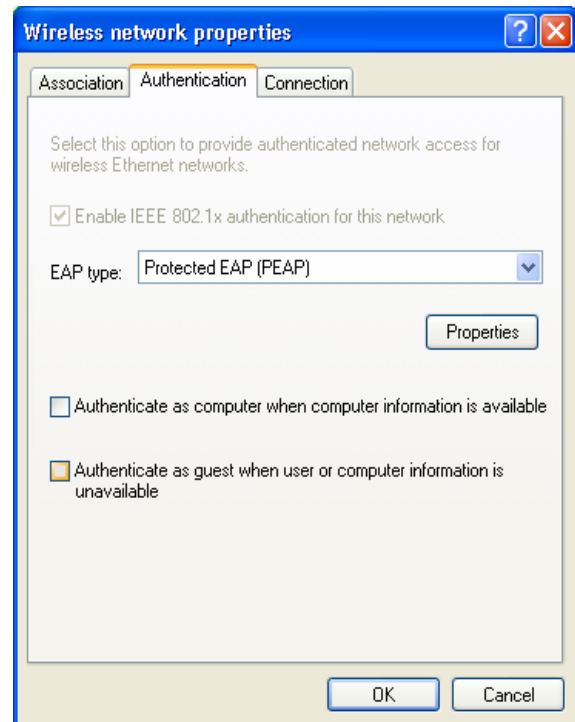
and then select the **Authentication** tab.



Select **Protected EAP (PEAP)**,

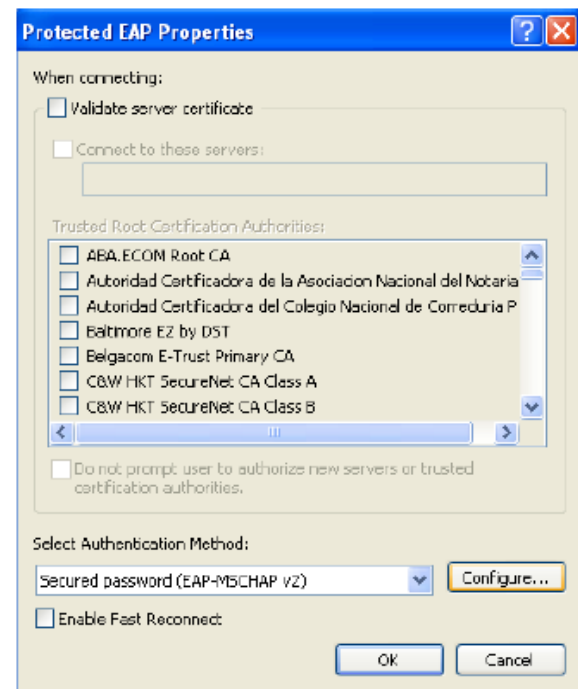
de-select “Authenticate as computer when computer information is available”,

and click **Properties**



Make sure that **Validate server certificate** is not selected,

and click **Configure..** for **Secured password (EAP-MSCHAP v2)**.



De-select “Automatically use my Windows logon name and Password (and domain if any).”

Click **OK** to 4 windows.



2. Connecting to the wireless network

Click right on the Wireless icon to view the available wireless networks, and select **eduroam**.



A dialogue balloon will appear in the system tray, click there.



The first time you connect a warning will show up: press OK

Enter **username and password**, leaving the **Logon domain** empty.

User name: **eft09**
Password: **pionupsilon**



When you have successfully authenticated a popup balloon like this will appear. You are connected.

