



International Workshop on Effective Field Theories from the Pion to the Upsilon




2-6 february 2009

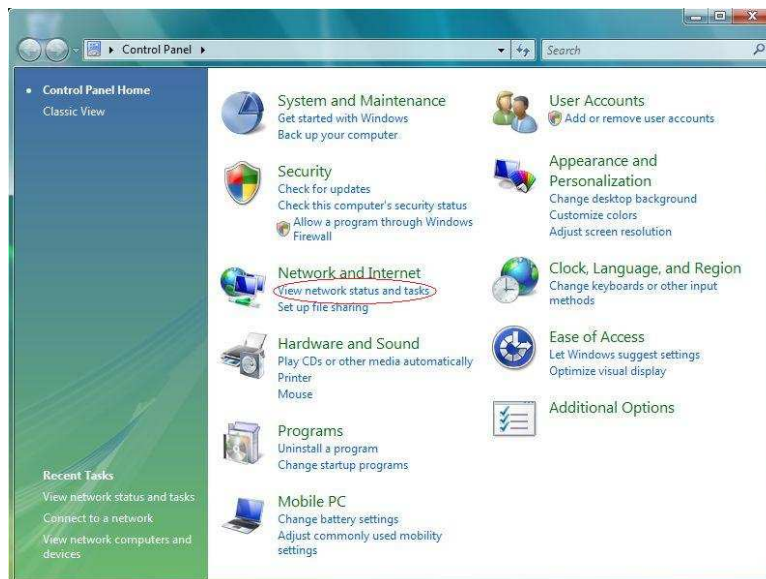
Valencia

Jardí Botànic

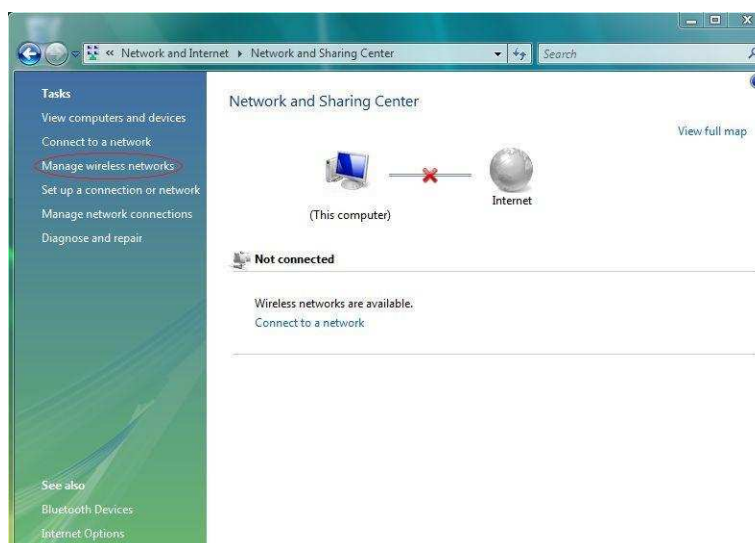
How to configure *eduroam* (WIRELESS network) in Windows VISTA

Step 1: Bring up the Control Panel to add wireless network profile

- Bring up Control Panel window by clicking Start  → Control Panel
- Click View network status and tasks, under Network and Internet



- Click Manage wireless networks

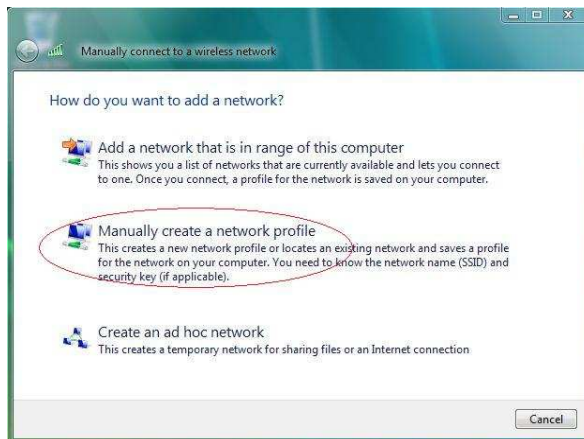


d. Click **Add**



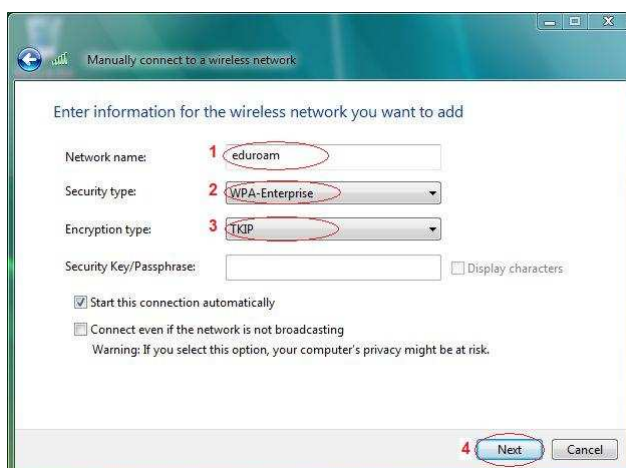
Step 2: Configure the wireless network profile

a. Click **Manually create a network profile**

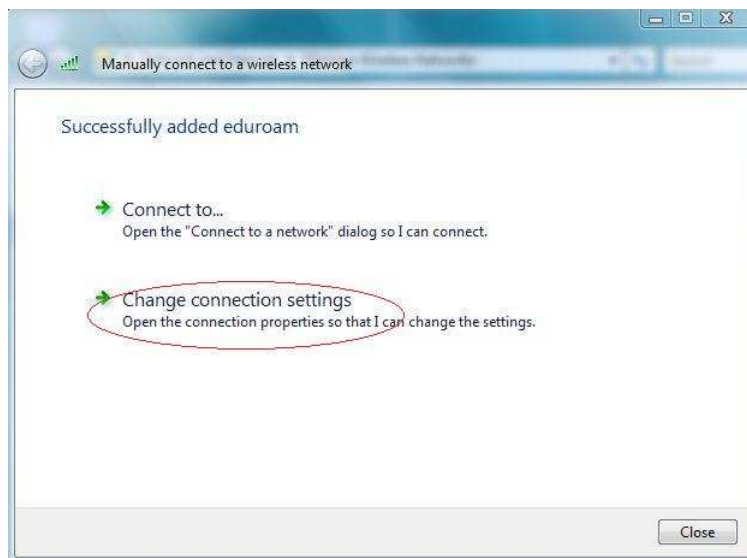


b. Enter wireless network information:

- Type in **eduroam** in the **Network name:** field (Note: It is case-sensitive)
- Select **WPA-Enterprise** in the **Security type:** field
- Select **TKIP** in the **Encryption type:** field
- Click **Next**

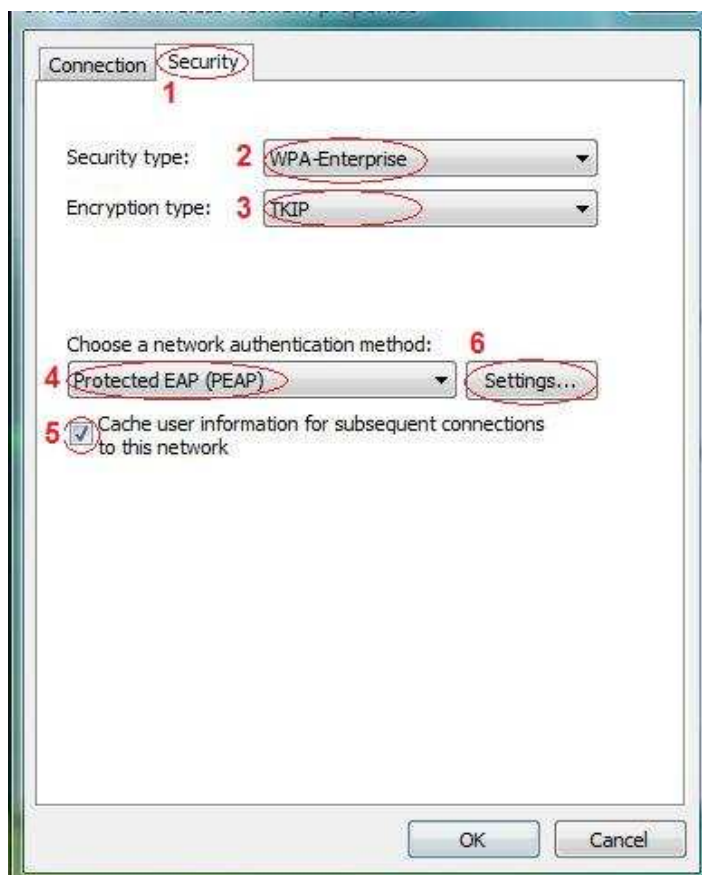


- c. Click **Change connection settings**

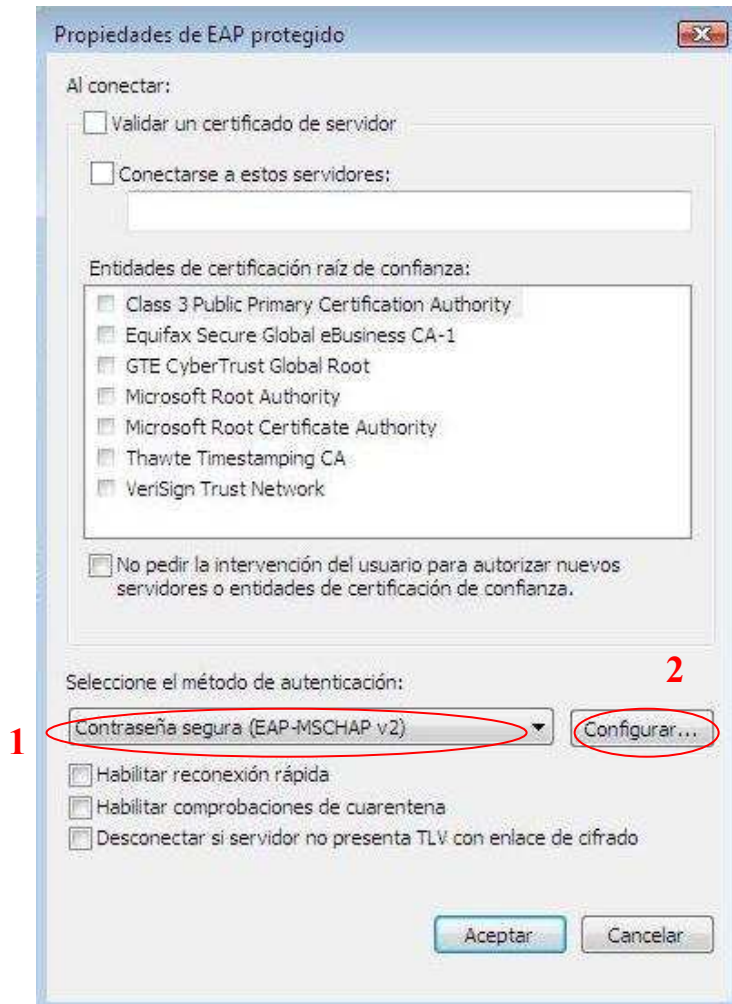


- d. Tab on **Security** tab:

- Select **WPA-Enterprise** in the **Security type:** drop down list
- Select **TKIP** in **Encryption type:** drop down list
- Select **Protected EAP (PEAP)**
- Click **Cache user information for subsequent connections to this network** (If you don't want to cache the password, please untick it)
- Click **Settings...**



- e. Configure **Protected PEAP properties**:
- o Ensure every box is unticked
 - o In the **Select Authentication Method**: drop down list, choose **Secure password (EAP-MSCHAP v2)**
 - o Press **Configure...**



- f. Untick **Automatically use my Windows logon name and password (and domain if any)**, press **OK** three times

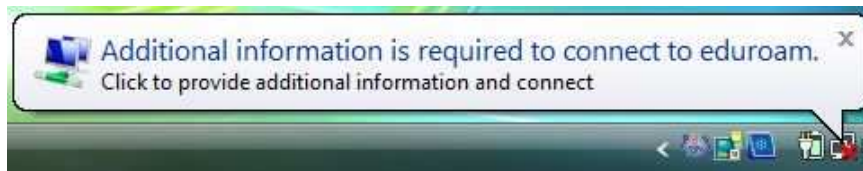


You are done with the configurations of eduroam!

How to access eduroam

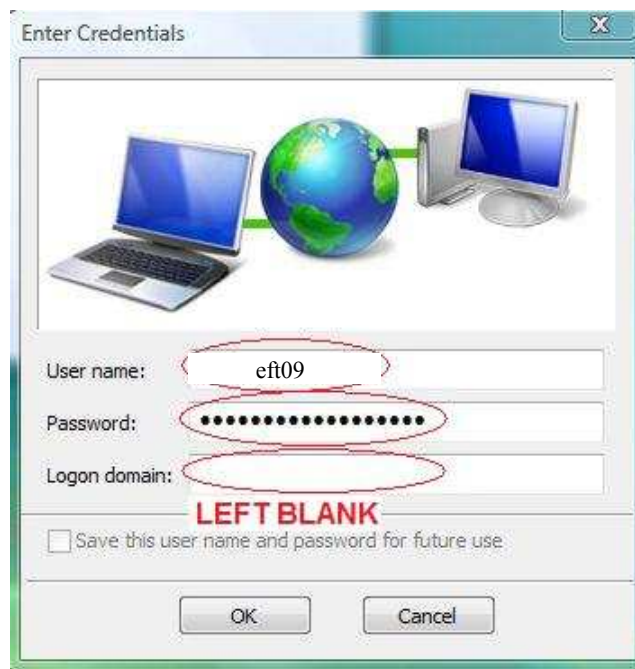
Step 1: Connect to eduroam

- a. When you reach any eduroam hotspot, you will see this icon in the system tray. Click on it and the **Enter Credentials** window will appear.



Step 2: Logon to eduroam

- a. In the **Enter Credentials** window:
 - o **Username:** eft09
 - o **Password:** pionupsilon
 - o Be sure to leave the **Logon domain:** blank
 - o Click **OK** to close the popup window.



- b. Please note that the username and password are cached and hence the above window will not re-appear until you change your password.

Congratulations! You have connected to eduroam!